



ethermo

System  
of industrial  
air conditioning

Release

2023

air conditioning

---

## INDEX

---

## INTRODUCTION

Our history

## CONDITIONERS

Our certifications  
Coding system

## OUR SOLUTIONS

ECD INDOOR RANGE  
Slim air conditioner  
Slim air conditioner UL  
Wall-mounted air conditioner  
Wall-mounted air conditioner UL  
Roof-mounted air conditioner  
Roof-mounted air conditioner UL

ECD OUTDOOR RANGE  
Door-mounted air conditioner UL  
Wall-mounted  
air conditioner UL  
Roof-mounted air conditioner UL

ESC OUTDOOR RANGE  
Air-to-air heat exchangers  
Air-to-air heat exchangers UL

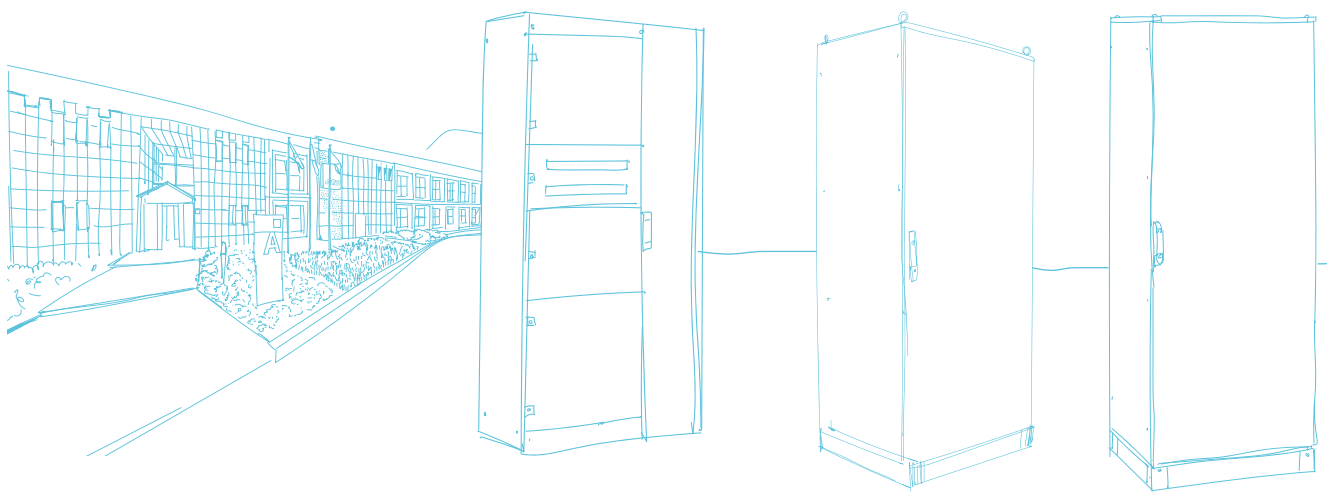
air conditioning



## THERMAL MANAGEMENT, AIR CONDITIONERS & AIR-TO-AIR HEAT EXCHANGERS

To provide an adequate air conditioning of the cabinet or air recirculation allows to optimize costs and times, preserving the optimal functioning of the electronic equipment.

ETA is  
History  
Family &  
Passion



Our first  
successful  
cabinet AR9000

A new  
born

A new  
born

# AR9000

# ARETA

# ENUX

## AIR-CONDITIONING

# 1978

## OUR HISTORY

Antonio Turati's heirs found ETA. Production work begins at the Castelmarte site

1980

The first numerically controlled machine is used. AR9000 is conceived, a very successful cabinet

1992

The new headquarters are built in Canzo

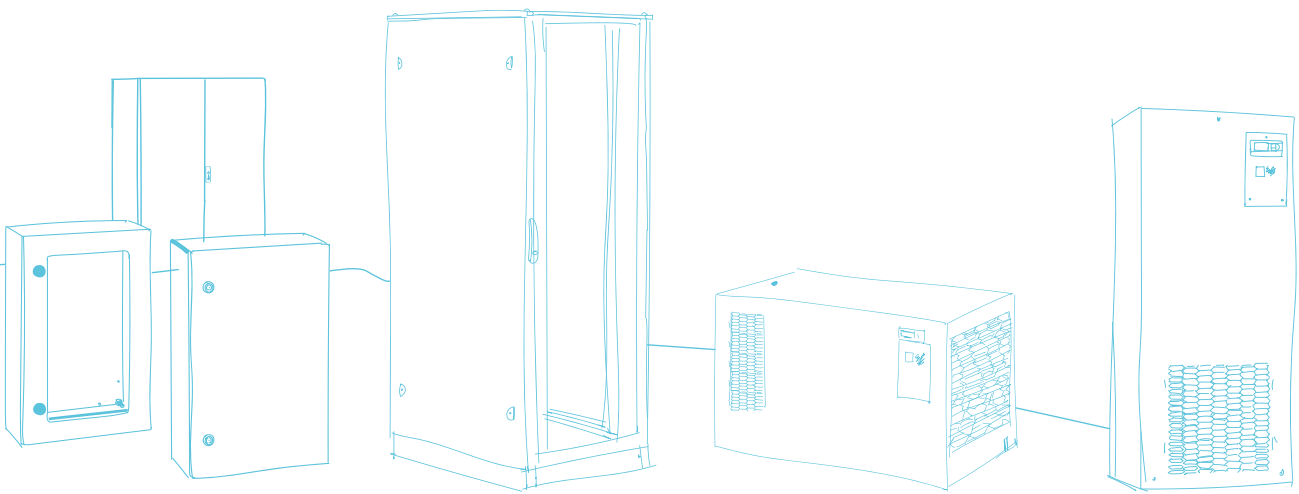
1999

Production of ARETA begins

2011

E NUX production begins: a construction system with avant-garde materials

Since 1978,  
E.T.A. SPA designs and manufactures high quality Enclosures for Industrial Automation, Harsh Environments, LV Energy Distribution and Information Technology. Our company's goal is to combine technological innovation with the experience acquired over the years, in order to offer the customer not simply a product, but a product solution



Versatile  
stainless steel  
enclosures

A solution  
suitable for IT  
business

A solution  
for industrial electronics

**E COR  
INOX**

**ABACUS**

**AIR  
CONDITIONER**

**2023**

2013

The ETA handle is wins honourable mention for the Compasso d'Oro by ADI

2017

The new R&D department ETA Next is born

2019

The new systems designed by ETA to build the E COR enclosures, with the concept of industry 4.0, come into operation.

2020

The new ETA handle is born

The air conditioning range by ETA is born



**1** ECD INDOOR RANGE  
ECD OUTDOOR RANGE  
ECS INDOOR RANGE

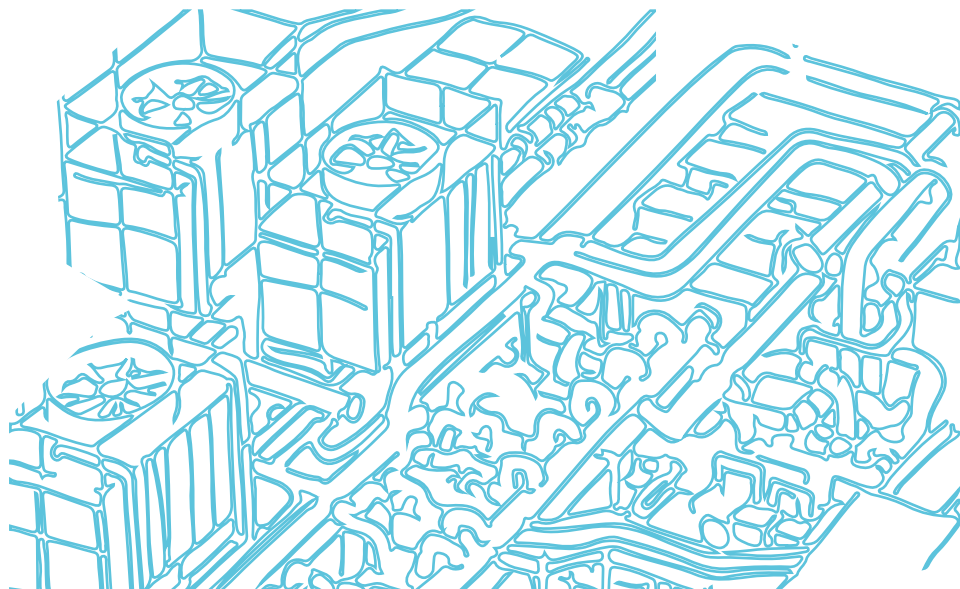
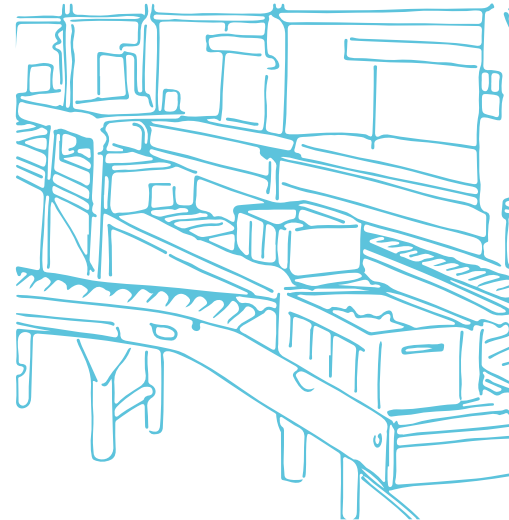
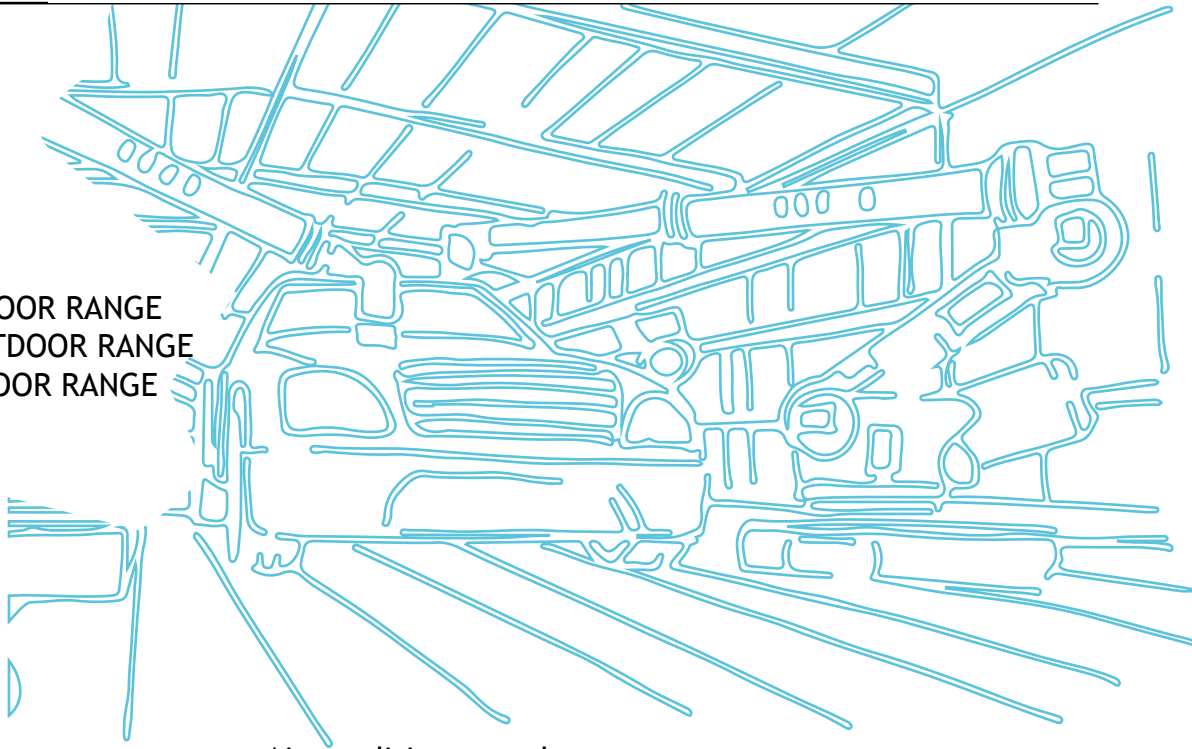
## BUSINESS SECTOR

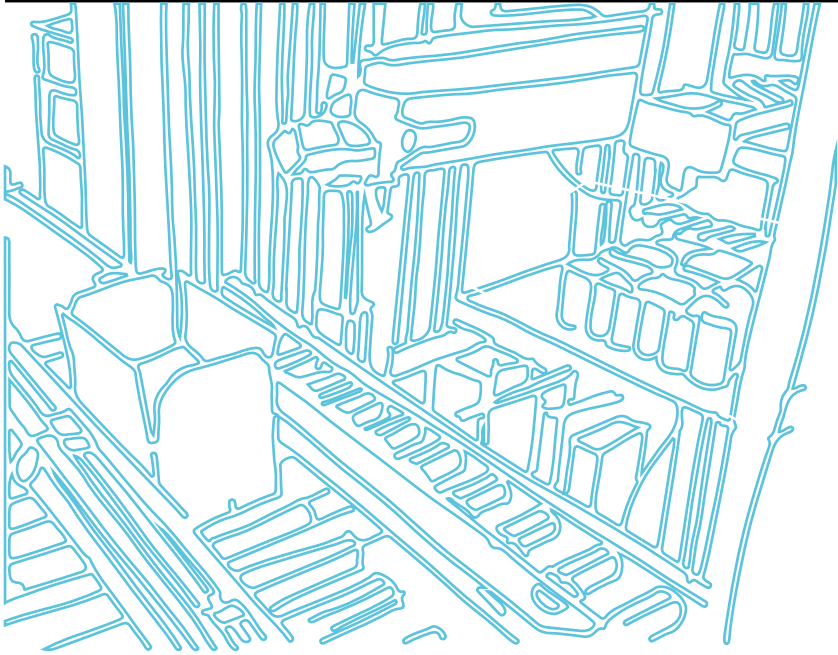
Air conditioners or heat exchangers are used and installed for the construction of complex industrial plants with different applications:

1. AUTOMOTIVE
2. PACKAGING
3. OIL & GAS
4. HANDLING & LOGISTIC
5. HVAC
6. MARINE & OFFSHORE

**3** ECD INDOOR RANGE  
ECD OUTDOOR RANGE  
ECS INDOOR RANGE

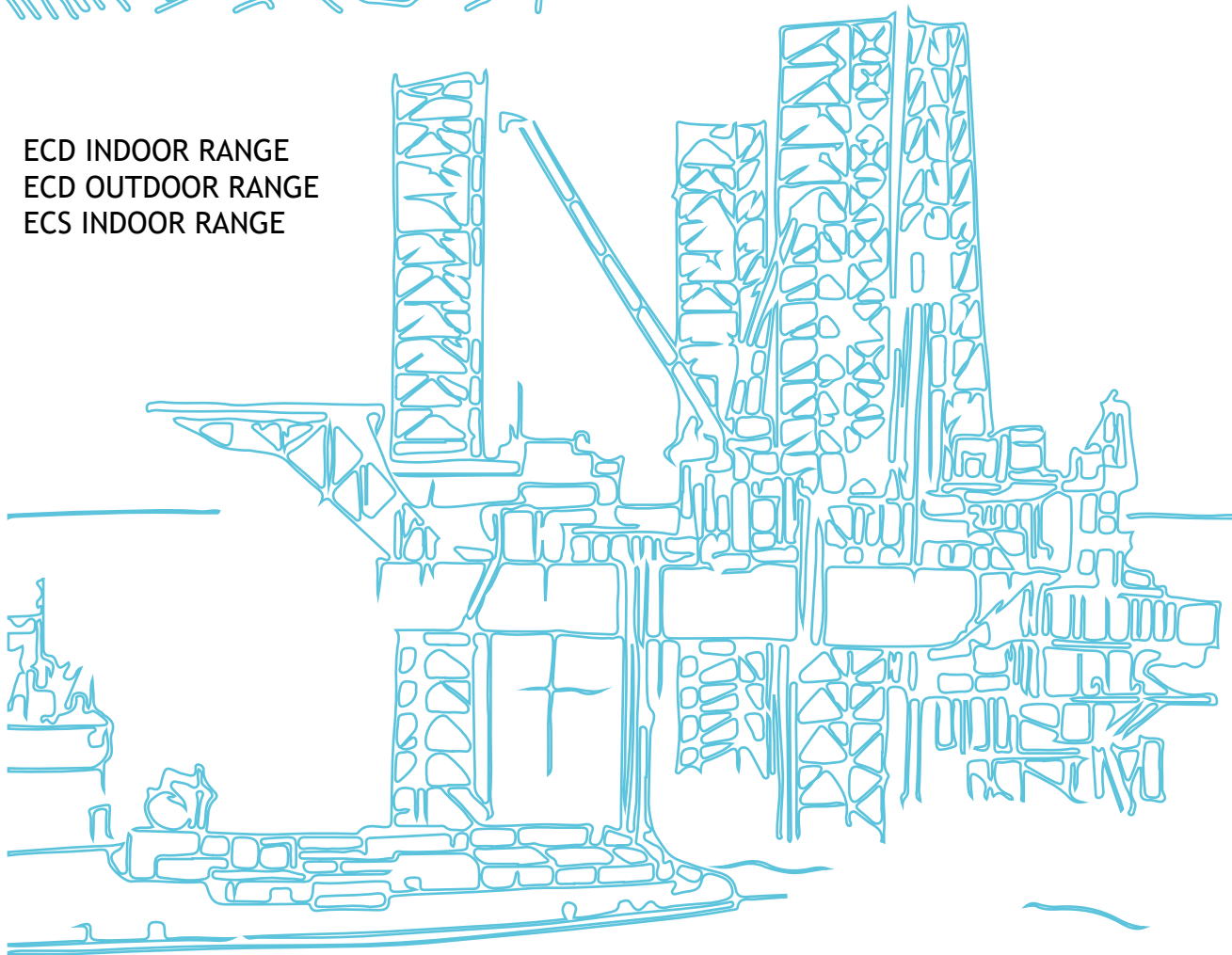
**5** ECD INDOOR RANGE  
ECD OUTDOOR RANGE  
ECS INDOOR RANGE





ECD INDOOR RANGE  
ECD OUTDOOR RANGE  
ECS INDOOR RANGE **2**

**4** ECD INDOOR RANGE  
ECD OUTDOOR RANGE  
ECS INDOOR RANGE



**6** ECD INDOOR RANGE  
ECD OUTDOOR RANGE  
ECS INDOOR RANGE



## AIR CONDITIONER COMPONENTS

### FAN

It has the task of maintaining an homogeneous temperature inside the electrical panel.

### THERMOSTAT

Calibrated to 35 °C, it ensures the correct operation of the air conditioner and the electronics present in the cabinet, avoiding condensation; it is therefore an indispensable operating parameter and warranty clause.

### COMPRESSOR

It has the function and purpose of compressing the refrigerant gas. It therefore allows the movement of the gas within the circuit.

### CONDENSING BATTERY

It is part of the external unit of the air conditioner and serves to dissipate heat.

### DEHYDRATOR FILTER

Liquid gas passes through the filter dehydrator that eliminates residual moisture and impurities protecting the system.

### LAMINATION ORGAN CALLED CAPILLARY TUBE

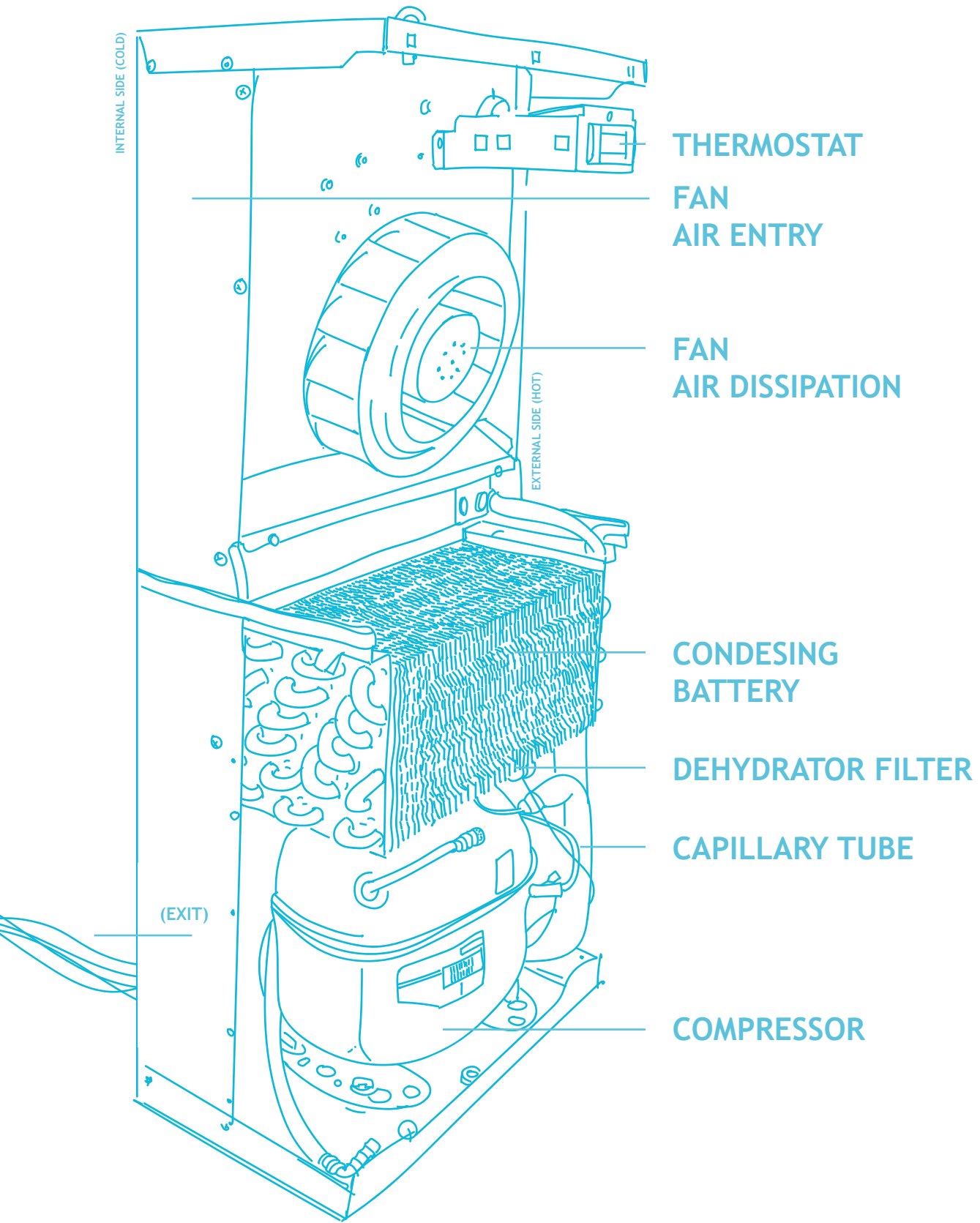
It aims to bring the refrigerant from the gaseous state to liquid using the liquefaction principle, under certain pressure and temperature conditions.

### EVAPORATING BATTERY

The finned battery, consisting of copper tube and flat aluminum foil fins, transports the coolant inside to the aeriform state, bringing the evaporating battery to a temperature of 8 °C.







## AIR CONDITIONERS, HOW TO COMPOSE THE CODE

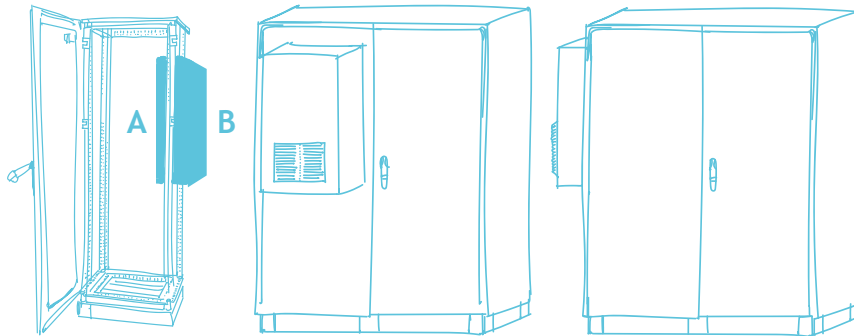
E	CD	04	15	.W	U	E
ETA	Product range CONDITIONERS	Cooling power W	Volt/ Frequency	Mounting	Extra application	Product version
	CD = air conditioners	04 = 400W 05 = 500W 08 = 800W 10 = 1000W 11 = 1100W 15 = 1500W 20 = 2000W 22 = 2200W 30 = 3000W 40 = 4000W	15 = 115V 23 = 230V 40 = 400V 44 = 440V 46 = 460V	.W = WALL .R = ROOF .D = EXTRA SMALL	U = UL O = OUTDOOR UL	E = EXTERNAL I = RECESSED P = PARTIAL EXTERNAL S = SEMI RECESSED

## HEAT EXCHANGERS, HOW TO COMPOSE THE CODE

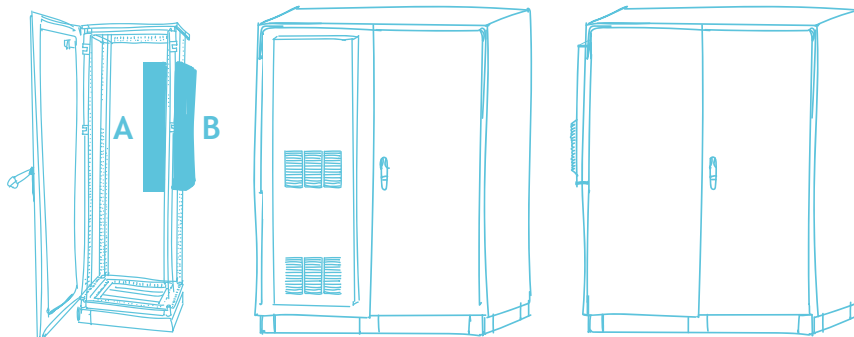
E	SC	04	15	.AA	U	E
ETA	Product range - HEAT EXCHANGERS	Cooling power W	Volt/ Frequency	Mounting	Extra application	Product version
	SC = heat exchangers	17 = 17W/k 40 = 40W/k 55 = 55W/k	15 = 115V 23 = 230V 40 = 400V 44 = 440V 46 = 460V	.AA = AIR-TO-AIR	U = UL	E = EXTERNAL

## \*MOUNTING TYPE

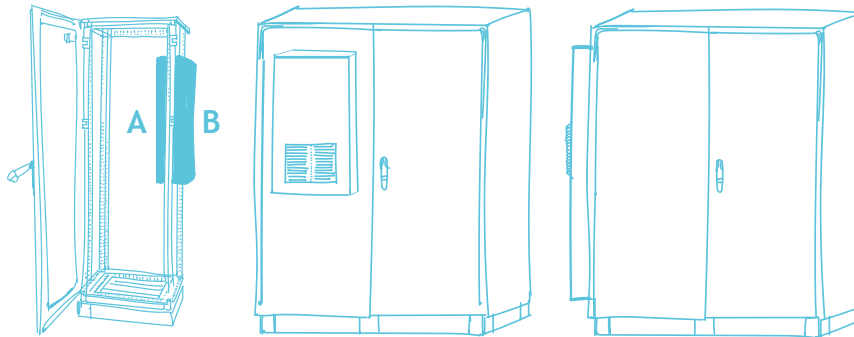
### EXTERNAL MOUNTED



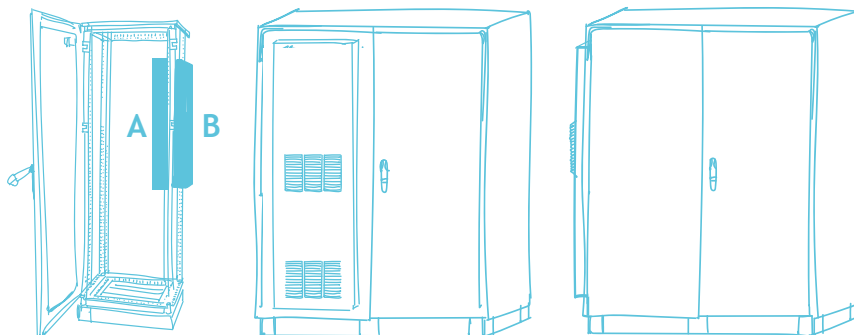
### BUILT-IN MOUNTED



### EXTERNAL PARTIALLY MOUNTED



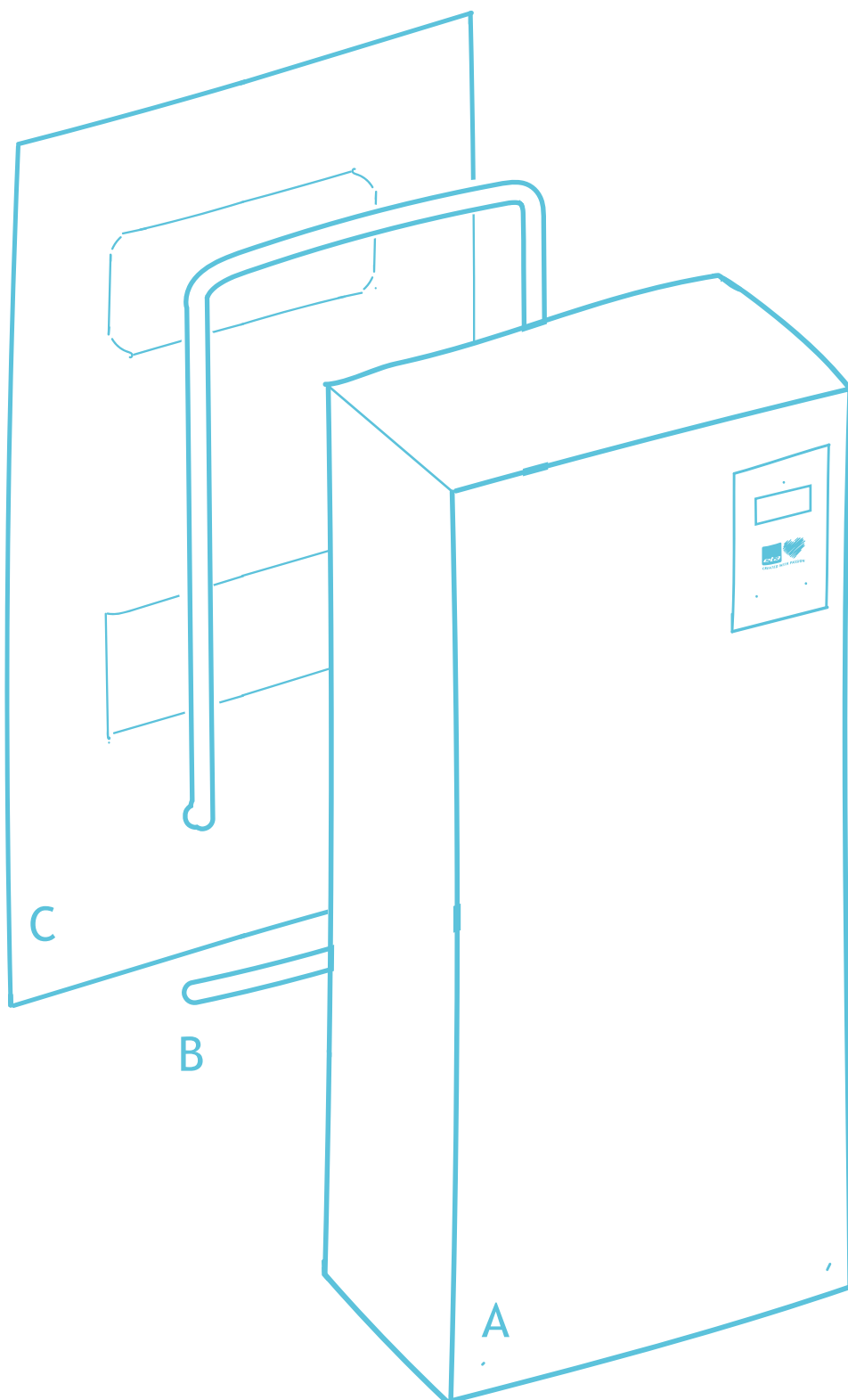
### SEMI BUILT-IN MOUNTED



* VERSION	EXTERNAL	BUILT-IN	EXTERNAL PARTIALLY	SEMI BUILT-IN
A	0 MM	141 MM	29 MM	81 MM
B	205 MM	61 MM	173 MM	121 MM

## DRILLING TEMPLATE

- A. AIR CONDITIONER/  
AIR-AIR EXCHANGER
- B. GASKET
- C. DRILLING TEMPLATE



air conditioning

## EXAMPLE OF AN AIR CONDITIONER ASSEMBLY

1. Remove the assembly screws from the cover

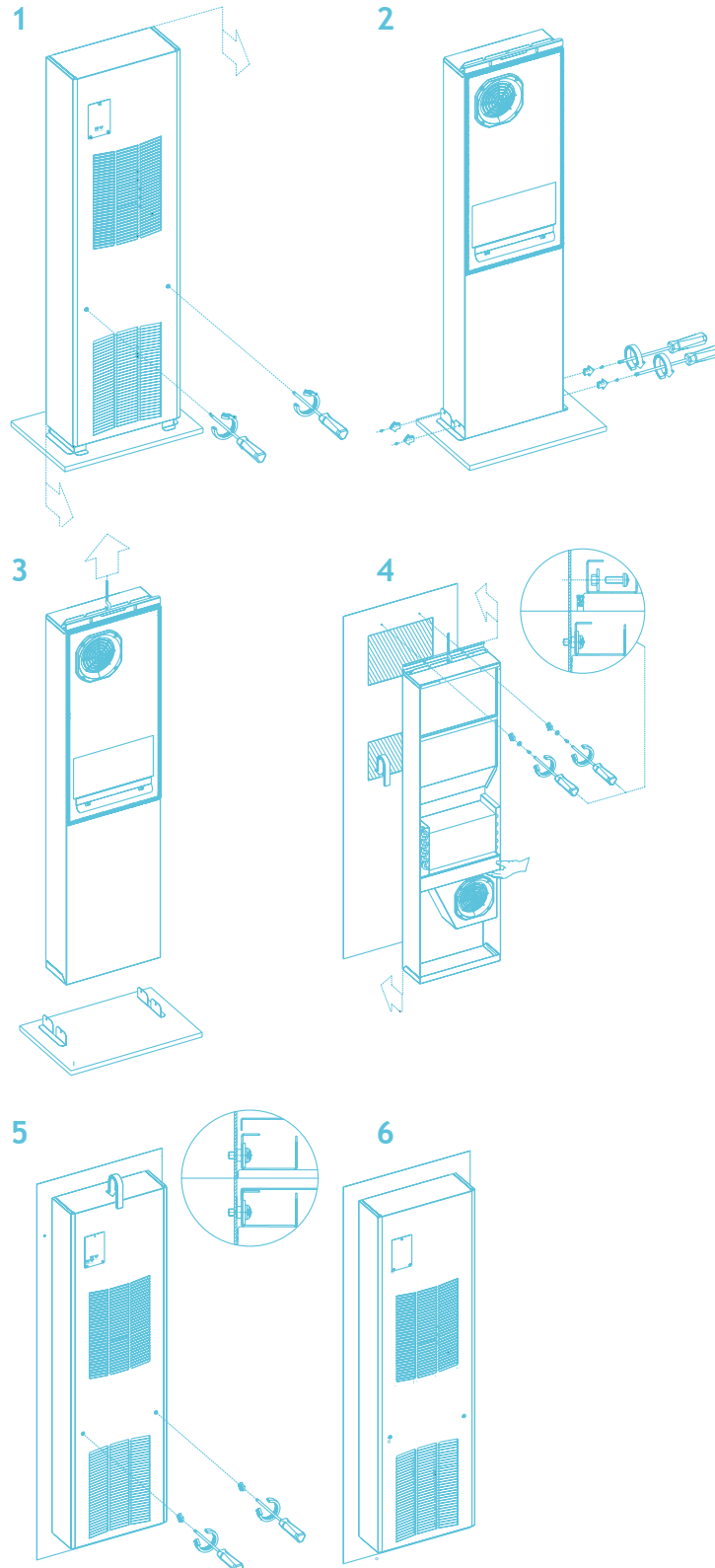
2. Apply the gasket on the air conditioner back and remove the assembly screws from the pallet

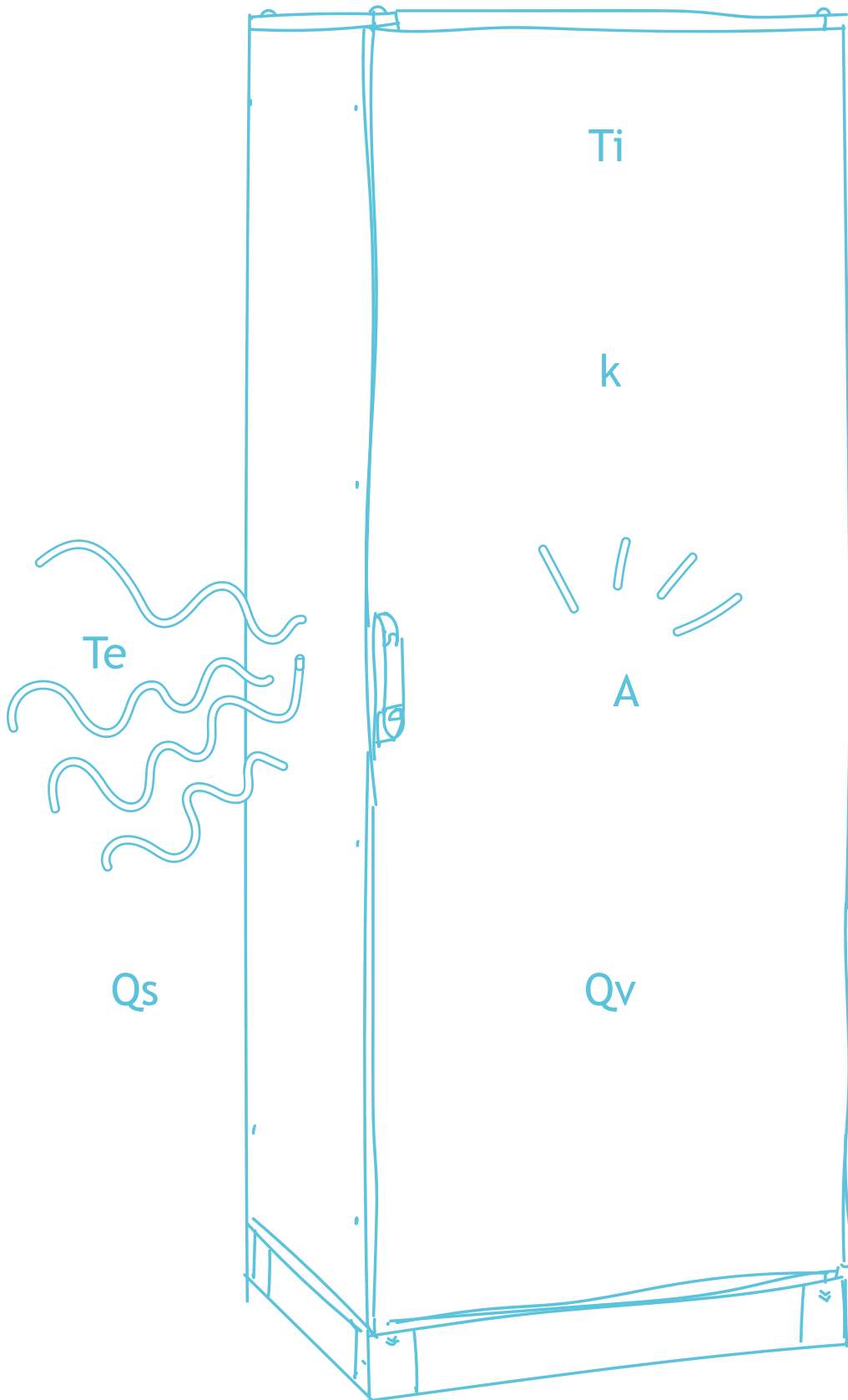
3. Remove the air conditioner from the pallet

4. House the air conditioner on the door and attach it to the carpentry

5. Fit the cover on the air conditioner and fix it.

6. Assembly completed





## WHY YOUR ENCLOSURE NEED AN AIR CONDITIONER

One of the biggest enemies of expensive electronic components is heat. Current technologies have allowed us to develop products that dissipate less energy, but to counter this positive aspect of the research there is the increase in the number of components that are inserted inside the control cabinets. So how can cooling take place?

## HOW COOLING TAKE PLACE

Through the walls of the cabinet, through convection or with positive temperature difference  
Difference between  $T_i > T_e$

$T_i$  = Desired max. temperature inside the cabinet

$T_e$  = Desired max. temperature outside the cabinet

How to calculate the maximum temperature increase that can occur in your enclosure compared to the outside?

$$T_i - T_e = Q_v / k \times A$$

$k$  = coefficient of thermal transmission

$A$  = actual cabinet surface

$Q_v$  = power dissipated

## AIR CONDITIONER YES OR NO?

If the dissipated power exceeds 10 K the maximum operating temperature of the product then, the dissipation through the walls of the cabinet will not be enough, but you will need to use an air conditioner.







## OUR SOLUTIONS

### **ECD INDOOR RANGE**

**SLIM AIR CONDITIONER**

**SLIM AIR CONDITIONER UL**

**WALL-MOUNTED AIR CONDITIONER**

**WALL-MOUNTED AIR CONDITIONER UL**

**ROOF-MOUNTED AIR CONDITIONER**

**ROOF-MOUNTED AIR CONDITIONER UL**

### **ECD OUTDOOR RANGE**

**WALL-MOUNTED AIR CONDITIONER UL**

**DOOR-MOUNTED AIR CONDITIONER UL**

**ROOF-MOUNTED AIR CONDITIONER UL**

### **ESC OUTDOOR RANGE**

**AIR-TO-AIR HEAT EXCHANGERS**

**AIR-TO-AIR HEAT EXCHANGERS UL**

They are certified as follow:



The CE mark certifies that the product complies with the requirements established by the European Union in terms of safety, health and environmental protection



Certification that guarantees the fulfilment of product safety and quality standards in the United States and Canada, making it highly competitive for the free circulation of products in international markets.





## INDOOR RANGE

The range of air conditioners designed for INDOOR installations includes products:

- Designed to ensure optimal operating conditions for electrical and electronic equipment
- Suitable for applications where a set point temperature lower than the ambient temperature is required

Various types of assembly to satisfy every type of application including:

- Door applications
- Wall applications
- Roof applications
- Different power supplies available
- High protection degree cabinet side (IP55)
- CE certified  
(and UL certified on most models)

air conditioning

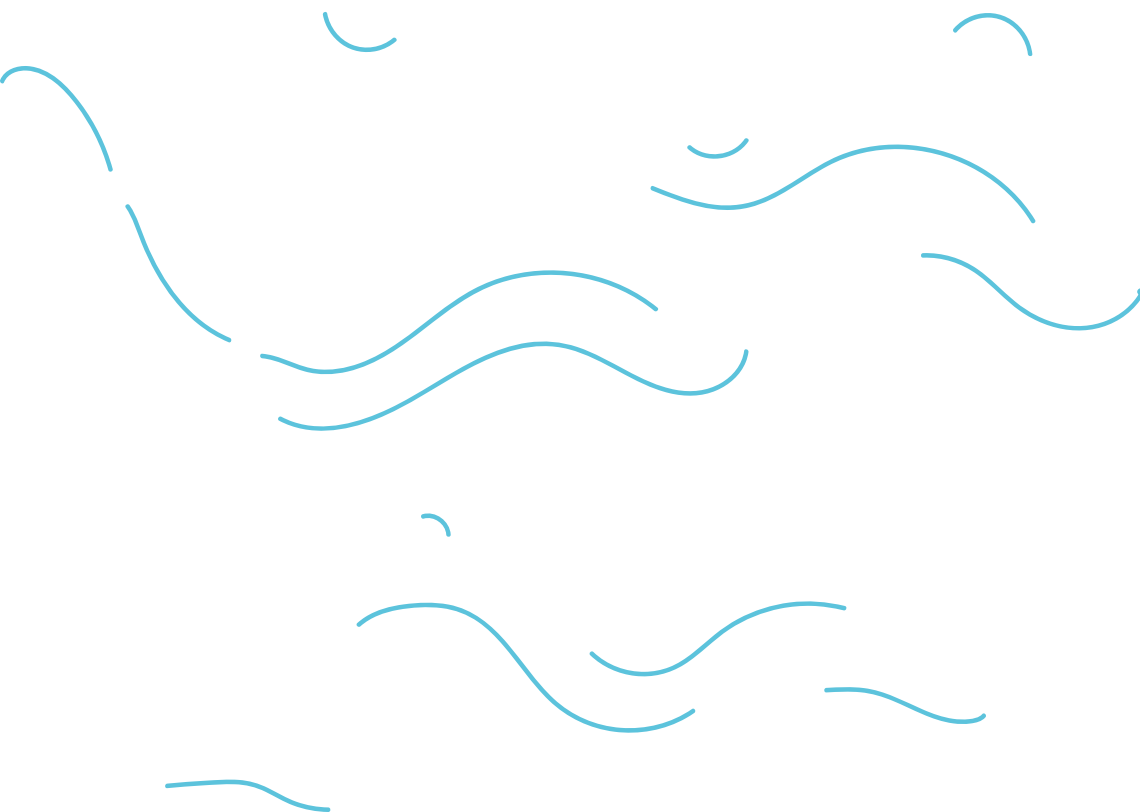


## SLIM AIR CONDITIONER



### GENERAL FEATURES

- Cooling capacity: 1100 - 2200 W
- Protection degree: IP55
- Display Kit
- Total/semi - recessed or external installation
- Quick electrical connections
- Sequencing and Modbus connection
- $\mu$ channel and self-cleaning condenser
- General alarm contacts and remote control
- Gasket already installed on the air conditioner
- Operation up to a temperature of 60°C
- Std. condensate drain hose
- Quick assembly and maintenance
- Designed to work without a filter
- Aluzinc material: more than 600 hours of salt spray resistance
- Quick electrical connection - terminal block
- Condensate dissipator optional
- Special painting on request



## IP55

### EXTERNAL MOUNTING

MODEL	VOLT/ FREQUENCY	POWER WATT	DIMENSIONS MM
ECD1123.DE	1 - 230/50-60	1100	460X1605X205
ECD1523.DE	1 - 230/50-60	1500	460X1605X205
ECD2246.DE	3 - 400/50-460/60	2200	460X1605X205
ECD1146.DE	3 - 400/50-460/60	1100	460X1605X205
ECD1546.DE	3 - 400/50-460/60	1500	460X1605X205
ECD2223.DE	1 - 230/50-60	2200	460X1605X205

### BUILT-IN MOUNTING

MODEL	VOLT/ FREQUENCY	POWER WATT	DIMENSIONS MM
ECD1123.DI	1 - 230/50-60	1100	495X1635X202
ECD1523.DI	1 - 230/50-60	1500	495X1635X202
ECD2246.DI	3 - 400/50 - 460/60	2200	495X1635X202
ECD1146.DI	3 - 400/50 - 460/60	1100	495X1635X202
ECD1546.DI	3 - 400/50 - 460/60	1500	495X1635X202
ECD2223.DI	1 - 230/50-60	2200	495X1635X202

### EXTERNAL PARTIALLY MOUNTING

MODEL	VOLT/ FREQUENCY	POWER WATT	DIMENSIONS MM
ECD1123.DP	1 - 230/50-60	1100	495X1635X202
ECD1523.DP	1 - 230/50-60	1500	495X1635X202
ECD2246.DP	3 - 400/50 - 460/60	2200	495X1635X202
ECD1146.DP	3 - 400/50 - 460/60	1100	495X1635X202
ECD1546.DP	3 - 400/50 - 460/60	1500	495X1635X202
ECD2223.DP	1 - 230/50-60	2200	495X1635X202

### SEMI BUILT-IN MOUNTING

MODEL	VOLT/ FREQUENCY	POWER WATT	DIMENSIONS MM
ECD1123.DS	1 - 230/50-60	1100	495X1635X202
ECD1523.DS	1 - 230/50-60	1500	495X1635X202
ECD2246.DS	3 - 400/50 - 460/60	2200	495X1635X202
ECD1146.DS	3 - 400/50 - 460/60	1100	495X1635X202
ECD1546.DS	3 - 400/50 - 460/60	1500	495X1635X202
ECD2223.DS	1 - 230/50-60	2200	495X1635X202



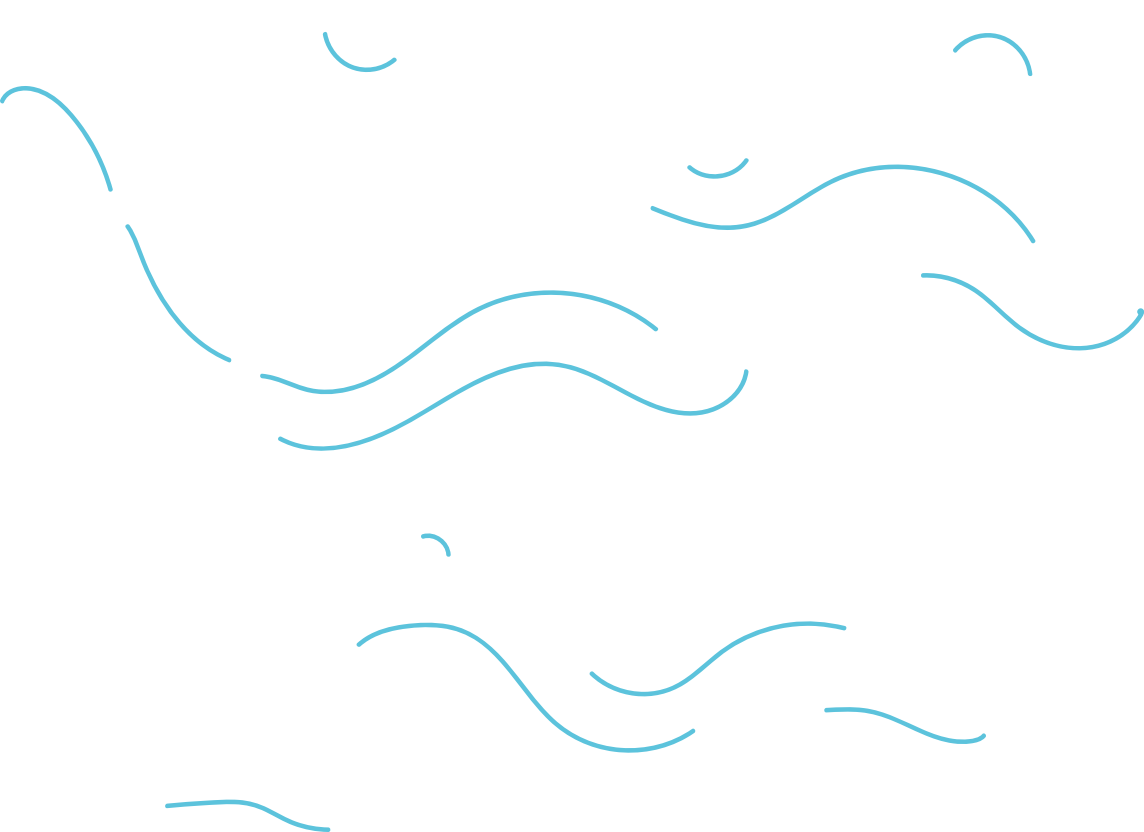


## SLIM AIR CONDITIONER UL CERTIFIED



### GENERAL FEATURES

- Cooling capacity: 1100 - 2200 W
- Protection degree: IP55
- Kit display
- Total/semi- recessed or external installation
- Quick electrical connections
- Sequencing and Modbus connection
- µchannel and self-cleaning condenser
- General alarm contacts and remote control
- Gasket already installed on the air conditioner
- Operation up to a temperature of 60°C
- Quick assembly and maintenance
- Designed to work without a filter
- Aluzinc material: more than 600 hours of salt spray resistance
- Quick electrical connection - terminal block
- Condensate dissipator optional
- Special painting on request



## EXTERNAL MOUNTING

MODEL	VOLT/ FREQUENCY	POW. WATT	DIMENSIONS MM
ECD1146.DUE	3 - 400/50 - 460/60	1100	460X1605X205
ECD1115.DUE	1 - 115/50-60	1100	460X1605X205
ECD1123.DUE	1 - 230/50-60	1100	460X1605X205
ECD1546.DUE	3 - 400/50 - 460/60	1500	460X1605X205
ECD1515.DUE	1 - 115/50-60	1500	460X1605X205
ECD1523.DUE	1 - 230/50-60	1500	460X1605X205
ECD2246.DUE	3 - 400/50 - 460/60	2200	460X1605X205
ECD2215.DUE	1 - 115/50-60	2200	460X1605X205
ECD2223.DUE	1 - 230/50-60	2200	460X1605X205

## BUILT-IN MOUNTING

MODEL	VOLT/ FREQUENCY	POW. WATT	DIMENSIONS MM
ECD1146.DUI	3 - 400/50-460/60	1100	495X1653X202
ECD1115.DUI	1 - 115/50-60	1100	495X1653X202
ECD1123.DUI	1 - 230/50-60	1100	495X1653X202
ECD1546.DUI	3 - 400/50 - 460/60	1500	495X1653X202
ECD1515.DUI	1 - 115/50-60	1500	495X1653X202
ECD1523.DUI	1 - 230/50-60	1500	495X1653X202
ECD2246.DUI	3 - 400/50 - 460/60	2200	495X1653X202
ECD2215.DUI	1 - 115/50-60	2200	495X1653X202
ECD2223.DUI	1 - 230/50-60	2200	495X1653X202

## EXTERNAL PARTIALLY MOUNTING

MODEL	VOLT/ FREQUENCY	POW. WATT	DIMENSIONS MM
ECD1146.DUP	1 - 230/50-60	1100	495X1653X202
ECD1115.DUP	1 - 115/50-60	1100	495X1653X202
ECD1123.DUP	3 - 400/50-460/60	1100	495X1653X202
ECD1546.DUP	3 - 400/50 - 460/60	1500	495X1653X202
ECD1515.DUP	3 - 400/50 - 460/60	1500	495X1653X202
ECD1523.DUP	1 - 230/50-60	1500	495X1653X202
ECD2246.DUP	3 - 400/50 - 460/60	2200	495X1653X202
ECD2215.DUP	1 - 230/50-60	2200	495X1653X202
ECD2223.DUP	1 - 230/50-60	2200	495X1653X202

## SEMI BUILT-IN MOUNTING

MODEL	VOLT/ FREQUENCY	POW. WATT	DIMENSIONS MM
ECD1146.DUS	3 - 400/50-460/60	1100	495X1653X202
ECD1115.DUS	1 - 230/50-60	1100	495X1653X202
ECD1123.DUS	1 - 230/50-60	1100	495X1653X202
ECD1546.DUS	3 - 400/50 - 460/60	1500	495X1653X202
ECD1515.DUS	3 - 400/50 - 460/60	1500	495X1653X202
ECD1523.DUS	1 - 230/50-60	1500	495X1653X202
ECD2246.DUS	3 - 400/50 - 460/60	2200	495X1653X202
ECD2215.DUS	3 - 400/50 - 460/60	2200	495X1653X202
ECD2223.DUS	1 - 230/50-60	2200	495X1653X202





## WALL-MOUNTED AIR CONDITIONER



### GENERAL FEATURES

- Cooling capacity: 400-4000 W
- Protection degree: IP55
- Kit display
- µchannel and self-cleaning condenser
- General alarm contacts and remote control
- Std. condensate drain hose
- Quick and fast assembly and maintenance
- Designed to work without a filter
- Aluzinc material: more than 600 hours of salt spray resistance
- Quick electrical connection - terminal block
- Condensate dissipator optional
- Special painting on request

### EXTERNAL MOUNTING

MODEL	VOLT/ FREQUENCY	POW. WATT	DIMENSIONS MM
ECD0423.WE	1 - 230/50-60	400	350x500x170
ECD0523.WE	1 - 230/50-60	500	300x650x185
ECD0823.WE	1 - 230/50-60	800	350x800x205
ECD1040.WE	2 - 400-460/50-60	1000	350x800x205
ECD1023.WE	1 - 230/50/60	1000	350x800x205
ECD1540.WE	2 - 400-460/50-60	1500	400x950x205
ECD1523.WE	1 - 230/50-60	1500	400x950x205
ECD2040.WE	2 - 400-460/50-60	2000	420x1260x270
ECD2023.WE	1 - 230/50-60	2000	420x1260x270
ECD0415.WE	1 - 115/50-60	400	350x500x170
ECD0840.WE	2 - 400-460/50-60	800	350x800x205
ECD0815.WE	1 - 115/50-60	800	350x800x205
ECD1015.WE	1 - 115/50-60	1000	350x800x205
ECD1515.WE	1 - 115/50-60	1500	400x950x25
ECD2046.WE	3 - 400-460/50-60	2000	420x1260x270
ECD2015.WE	1 - 115/50-60	2000	420x1260x270
ECD2546.WE	3 - 400-460/50-60	2500	420x1260x270
ECD3046.WE	3 - 400-460/50-60	3000	520x1410x300
ECD4046.WE	3 - 400-460/50-60	4000	520x1410x300



### BUILT-IN MOUNTING

MODEL	VOLT/ FREQUENCY	POW. WATT	DIMENSIONS MM
ECD0423.WI	1 - 230/50-60	400	350x500x170
ECD0523.WI	1 - 230/50-60	500	350x710x40
ECD0823.WI	1 - 230/50-60	800	400x855x40
ECD1040.WI	2 - 400-460/50-60	1000	400x855x205
ECD1023.WI	1 - 230/50-60	1000	400x855x40
ECD1540.WI	2 - 400-460/50-60	1500	400x950x205
ECD1523.WI	1 - 230/50-60	1500	450x1010x40
ECD0415.WI	1 - 115/50-60	400	350x500x170
ECD0540.WI	2 - 400-460/50-60	500	350x710x40
ECD0515.WI	1 - 115/50-60	500	350x710x40
ECD0840.WI	2 - 400-460/50-60	800	400x855x40
ECD0815.WI	1 - 115/50-60	800	400x855x40
ECD1015.WI	1 - 115/50-60	1000	400x855x40
ECD1515.WI	1 - 115/50-60	1500	400x855x40

### SEMI BUILT-IN MOUNTING

MODEL	VOLT/ FREQUENCY	POW. WATT	DIMENSIONS MM
ECD0423.WS	1 - 230/50-60	400	350x500x170
ECD0523.WS	1 - 230/50-60	500	350x710x40
ECD0823.WS	1 - 230/50-60	800	400x855x120
ECD1040.WS	2 - 400-460/50-60	1000	400x855x120
ECD1023.WS	1 - 230/50/60	1000	400x855x40
ECD1540.WS	2 - 400-460/50-60	1500	450x1010x120
ECD1523.WS	1 - 230/50-60	1500	450x1010x120
ECD2040.WS	2 - 400-460/50-60	2000	470x1295x150
ECD2023.WS	1 - 230/50-60	2000	470x1295x150
ECD0415.WS	1 - 115/50-60	400	350x500x170
ECD0540.WS	2 - 400-460/50-60	500	300x650x185
ECD0515.WS	1 - 115/50-60	500	350x710x40
ECD0840.WS	2 - 400-460/50-60	800	400x855x40
ECD0815.WS	1 - 115/50-60	800	400x855x120
ECD1015.WS	1 - 115/50-60	1000	400x855x120
ECD1515.WS	1 - 115/50-60	1500	450x1010x120
ECD2046.WS	3 - 400-460/50-60	2000	470x1295x150
ECD2015.WS	1 - 115/50-60	2000	470x1295x150
ECD2546.WS	3 - 400-460/50-60	2500	470x1295x150
ECD3046.WS	3 - 400-460/50-60	3000	570x1450x165
ECD4046.WS	3 - 400-460/50-60	4000	570x1450x165





## WALL - MOUNTED AIR CONDITIONER UL CERTIFIED



### GENERAL FEATURES

- Cooling capacity: 500-4000 W
- Protection degree: IP55
- µchannel and self-cleaning condenser
- General alarm contacts and remote control
- Quick and fast assembly and maintenance
- Designed to work without a filter
- Aluzinc material: more than 600 hours of salt spray resistance
- Quick electrical connection - terminal block
- Condensate dissipator standard
- Special painting on request

### EXTERNAL MOUNTING

MODEL	VOLT/ FREQUENCY	POW. WATT	DIMENSIONS MM
ECD0515.WUE	1 - 115/50-60	500	300X650X185
ECD0523.WUE	1 - 230/50-60	500	300X650X185
ECD0815.WUE	1 - 115/50-60	800	350X800X205
ECD0823.WUE	1 - 230/50-60	800	350X800X205
ECD1515.WUE	1 - 115/60-60	1500	400X950X205
ECD1523.WUE	1 - 230/50-60	1500	400X950X205
ECD2015.WUE	1 - 115/60-60	2000	420X1260X270
ECD2023.WUE	1 - 230/50-60	2000	420X1260X270
ECD0540.WUE	2 - 400-460/50-60	500	300X350X185
ECD0840.WUE	2 - 400-460/50-60	800	300X350X185
ECD1040.WUE	2 - 400-460/50-60	1000	350X800X205
ECD1015.WUE	1 - 115/60-60	1000	350X800X205
ECD1023.WUE	1 - 230/50-60	1000	400X950X205
ECD1540.WUE	2 - 400-460/50-60	1500	400X950X205
ECD2046.WUE	3 - 400-460/50-60	2000	420X1260X270
ECD2040.WUE	2 - 400-460/50-60	2000	420X1260X270
ECD2546.WUE	3 - 400-460/50-60	2500	420X1260X270
ECD3046.WUE	3 - 400-460/50-60	3000	520X1410X300
ECD4046.WUE	3 - 400-460/50-60	4000	520X1410X300

## BUILT-IN MOUNTING

MODEL	VOLT/ FREQUENCY	POW. WATT	DIMENSIONS MM
ECD0515.WUI	1- 115/50-60	500	350X710X40
ECD0523.WUI	1 - 230/50-60	500	350X710X40
ECD0815.WUI	1 - 115/50-60	800	400X855X40
ECD0823.WUI	1 - 230/50-60	800	400X855X40
ECD1515.WUI	1 - 115/60-60	1500	400X855X40
ECD1523.WUI	1 - 230/50-60	1500	450X1010X120
ECD0540.WUI	2 - 400-460/50-60	500	450X1010X40
ECD0840.WUI	2 - 400-460/50-60	800	400X855X40
ECD1040.WUI	2 - 400-460/50-60	1000	400X855X40
ECD1015.WUI	1 - 115/60-60	1000	400X855X40
ECD1023.WUI	1 - 230/50-60	1000	400X855X40
ECD1540.WUI	2 - 400-460/50-60	1500	450X1010X40

## SEMI BUILT-IN MOUNTING

MODEL	VOLT/ FREQUENCY	POW. WATT	DIMENSIONS MM
ECD0515.WUS	1- 115/50-60	500	350X710X100
ECD0523.WUS	1 - 230/50-60	500	350X710X100
ECD0815.WUS	1 - 115/50-60	800	400X855X120
ECD0823.WUS	1 - 230/50-60	800	400X855X120
ECD1515.WUS	1 - 115/60-60	1500	450X1010X120
ECD1523.WUS	1 - 230/50-60	1500	450X1010X40
ECD2015.WUS	1 - 115/60-60	2000	470X1295X150
ECD2023.WUS	1 - 230/50-60	2000	470X1295X150
ECD0540.WUS	2 - 400-460/50-60	500	350X710X100
ECD0840.WUS	2 - 400-460/50-60	800	400X855X120
ECD1040.WUS	2 - 400-460/50-60	1000	400X855X120
ECD1015.WUS	1 - 115/60-60	1000	400X855X120
ECD1023.WUS	1 - 230/50-60	1000	450X1010X120
ECD1540.WUS	2 - 400-460/50-60	1500	450X1010X120
ECD2046.WUS	3 - 400-460/50-60	2000	470X1295X150
ECD2040.WUS	2 - 400-460/50-60	2000	470X1295X150
ECD2546.WUS	3 - 400-460/50-60	2500	570X1450X165
ECD3046.WUS	3 - 400-460/50-60	3000	570X1450X165
ECD4046.WUS	3 - 400-460/50-60	4000	570X1450X165





## ROOF-MOUNTED AIR CONDITIONER



### GENERAL FEATURES

- Cooling capacity: 500-4000 W
- Self-cleaning condenser
- Protection degree: IP55
- Quick and fast assembly and maintenance
- Designed to work without a filter
- Aluzinc material: more than 600 hours of salt spray resistance
- Quick electrical connection - terminal block
- Condensate dissipator standard
- Special painting on request

## ROOF-MOUNTED AIR CONDITIONER UL CERTIFIED



### GENERAL FEATURES

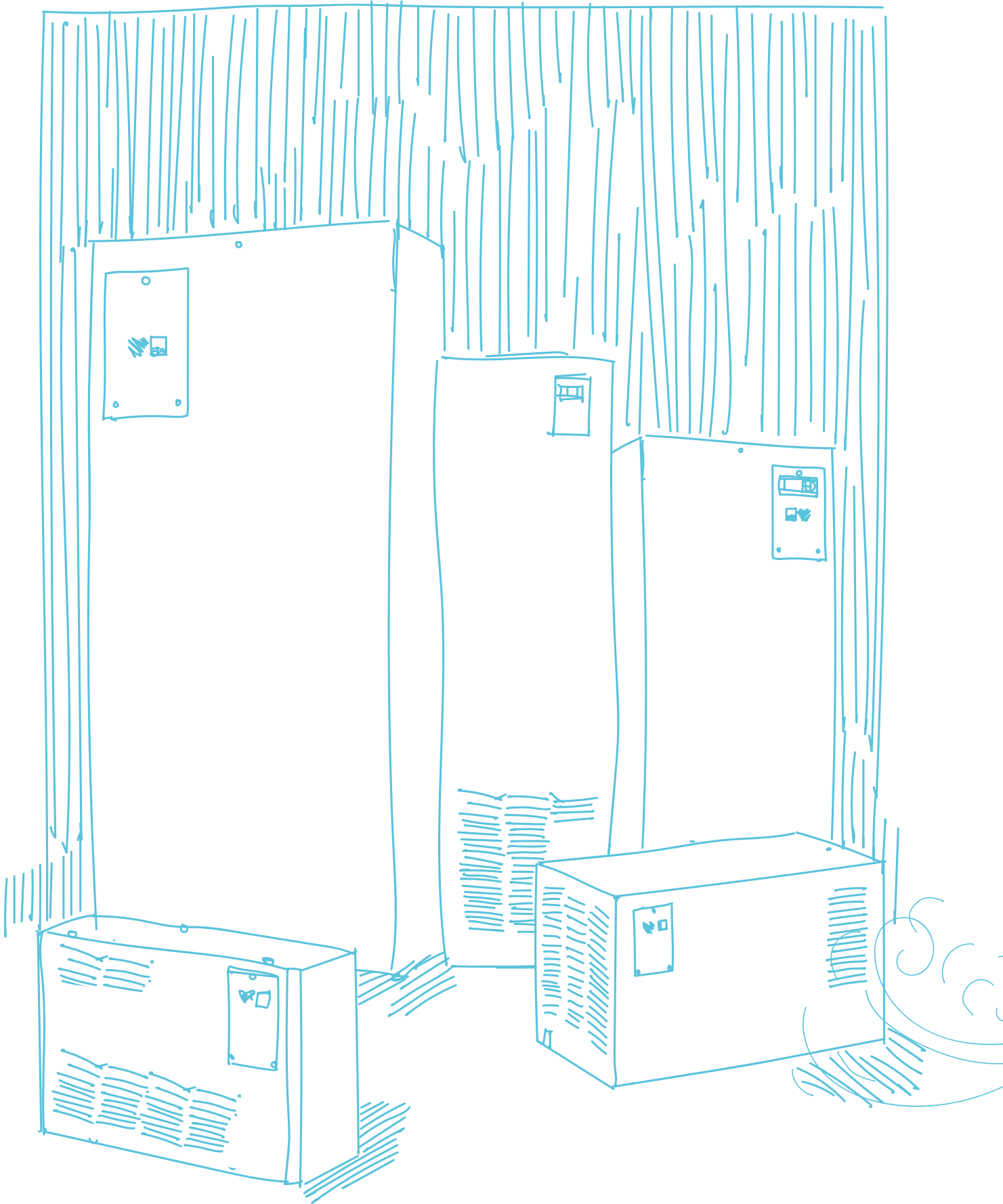
- Cooling capacity: 500-4000 W
- Self-cleaning condenser
- Protection degree: IP55
- Quick and fast assembly and maintenance
- Designed to work without a filter
- Aluzinc material: more than 600 hours of salt spray resistance
- Quick electrical connection - terminal block
- Condensate dissipator standard
- Special painting on request

## IP 55

MODEL	VOLT/ FREQUENCY	POW. WATT	DIMENSIONS MM
ECD0540.R	2 - 400/50-60	500	600X340X350
ECD0515.R	1 - 115/50-60	500	600X340X350
ECD0523.R	1 - 230/50-60	500	600X340X350
ECD0840.R	2 - 400-460/50-60	800	600X340X350
ECD0815.R	1 - 115/50-60	800	600X340X350
ECD0823.R	1 - 230/50-60	800	600X340X350
ECD1040.R	3 - 400/50 - 440/60	1000	600X340X350
ECD1015.R	1 - 115/50-60	1000	600X340X350
ECD1515.R	1 - 115/50-60	1500	600X340X350
ECD2044.R	3 - 400/50 - 440/60	2000	700X430X400
ECD2015.R	1 - 115/50-60	2000	700X430X400
ECD2023.R	1 - 230/50-60	2000	700X430X400
ECD2544.R	3 - 400/50 - 440/60	2500	800X470X450
ECD1023.R	1 - 230/50-60	1000	600X340X350
ECD1540.R	2 - 400/50 - 440/60	1500	700X400X400
ECD1523.R	1 - 230/50-60	1500	700X400X400
ECD3044.R	3 - 400/50 - 440/60	3000	800X470X450
ECD4044.R	3 - 400/50 - 440/60	4000	800X470X450

MODEL	VOLT/ FREQUENCY	POW. WATT	DIMENSIONS MM
ECD0840.RU	2 - 400-460/50-60	800	600X340X350
ECD0815.RU	1 - 115/50-60	800	600X340X350
ECD0823.RU	1 - 230/50-60	800	600X340X350
ECD1040.RU	2 - 400-460/50-60	1000	600X340X350
ECD1540.RU	2 - 400-460/50-60	1500	700X400X400
ECD1015.RU	1 - 115/50-60	1000	600X340X350
ECD1023.RU	1 - 230/50-60	1000	600X340X350
ECD1515.RU	1 - 115/50-60	1500	700X400X400
ECD1523.RU	1 - 230/50-60	1500	700X400X400







## ECD OUTDOOR RANGE

Thanks to the specific construction concept, materials and resistant finishes, the outdoor range of air conditioners ensures perfect protection from environmental factors, extreme temperatures, direct solar radiation, harsh environments, atmospheric, mechanical and chemical agents, vandalism.

- Currently available in the wall-mounted version, door-mounted version and roof-mounted version.

air conditioning

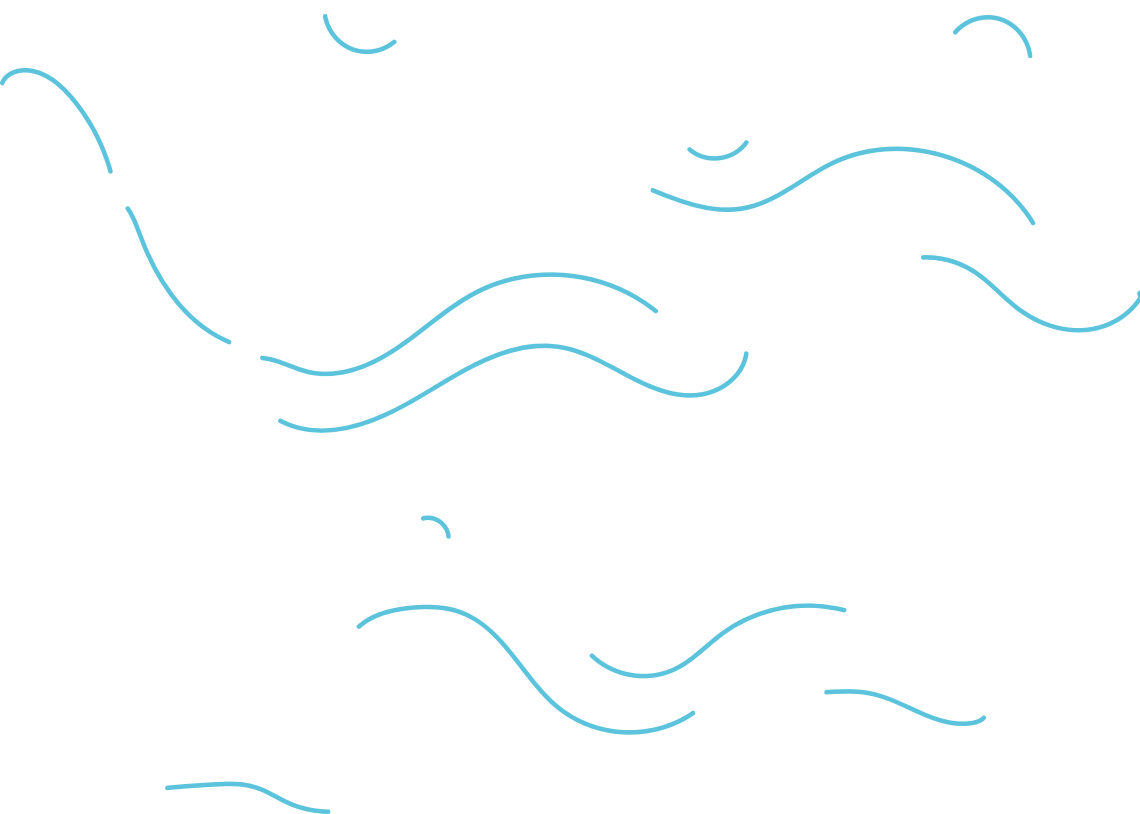


## WALL-MOUNTED AIR CONDITIONER



### GENERAL FEATURES

- Cooling capacity: 500-4000 W
- Protection degree: IP66 - NEMA 4X
- µchannel and self-cleaning condenser
- General alarm contacts and remote control
- Quick and fast assembly and maintenance
- Designed to work without a filter
- Material: stainless steel AISI 304L
- Quick electrical connection - terminal block
- Special painting on request





## EXTERNAL MOUNTING

MODEL	VOLT/ FREQUENCY	POW. WATT	DIMENSIONS MM
ECD0540.WOE	2 - 400-50/460-60	500	300X350X185
ECD0515.WOE	1 - 115/50-60	500	300X650X185
ECD0523.WOE	1 - 230/50-60	500	300X650X185
ECD0840.WOE	2 - 400-50/460-60	800	350X800X205
ECD0815.WOE	1 - 115/50-60	800	350X800X205
ECD1040.WOE	2 - 400-50/460-60	1000	350X800X205
ECD1015.WOE	1 - 115/50-60	1000	350X800X205
ECD1023.WOE	1 - 230/50-60	1000	350X800X205
ECD0823.WOE	1 - 230/50-60	800	350X800X205
ECD1523.WOE	1 - 230/50-60	1500	450X1010X120
ECD1540.WOE	2 - 400-50/460-60	1500	450X1010X120
ECD1515.WOE	1 - 115/50-60	1500	450X1010X120
ECD2046.WOE	3 - 400-50/460-60	2000	470X1295X150
ECD2040.WOE	2 - 400-50/460-60	2000	420X1260X270
ECD2015.WOE	1 - 115/50-60	2000	420X1260X270
ECD2023.WOE	1 - 230/50-60	2000	420X1260X270
ECD3046.WOE	3 - 400-50/460-60	3000	520X1410X300
ECD4046.WOE	3 - 400-50/460-60	4000	520X1410X300

## BUILT-IN MOUNTING

MODEL	VOLT/ FREQUENCY	POW. WATT	DIMENSIONS MM
ECD0540.WOS	2 - 400-50/460-60	500	300X350X100
ECD0515.WOS	1 - 115/50-60	500	350X710X100
ECD0523.WOS	1 - 230/50-60	500	350X710X100
ECD0840.WOS	2 - 400-50/460-60	800	400X855X120
ECD0815.WOS	1 - 115/50-60	800	400X855X120
ECD1040.WOS	2 - 400-50/460-60	1000	400X800X205
ECD1015.WOS	1 - 115/50-60	1000	400X800X205
ECD1023.WOS	1 - 230/50-60	1000	400X800X205
ECD1540.WOS	2 - 400-50/460-60	1500	450X1010X120
ECD1515.WOS	1 - 115/50-60	1500	400X950X205
ECD2046.WOS	3 - 400-50/460-60	2000	450X1010X120
ECD2040.WOS	2 - 400-50/460-60	2000	450X1010X120
ECD2015.WOS	1 - 115/50-60	2000	470X1295X150
ECD2023.WOS	1 - 230/50-60	2000	420X1260X270
ECD3046.WOS	3 - 400-50/460-60	3000	520X1410X300
ECD4046.WOS	3 - 400-50/460-60	4000	570X1450X165
ECD0823.WOS	1 - 230/50-60	800	400X855X120
ECD1523.WOS	1 - 230/50-60	1500	450X1010X120
ECD2023.WOS	1 - 230/50-60	2000	470X1295X150

## SEMI BUILT-IN MOUNTING

MODEL	VOLT/ FREQUENCY	POW. WATT	DIMENSIONS MM
ECD0540.WOI	2 - 400-50/460-60	500	350X710X40
ECD0515.WOI	1 - 115/50-60	500	350X710X40
ECD0523.WOI	1 - 230/50-60	500	350X710X40
ECD0840.WOI	2 - 400-50/460-60	800	400X855X40
ECD0815.WOI	1 - 115/50-60	800	400X855X40
ECD1040.WOI	2 - 400-50/460-60	1000	400X855X40
ECD1015.WOI	1 - 115/50-60	1000	400X855X40
ECD1023.WOI	1 - 230/50-60	1000	400X855X40
ECD1540.WOI	2 - 400-50/460-60	1500	450X1010X40
ECD1515.WOI	1 - 115/50-60	1500	450X1010X40



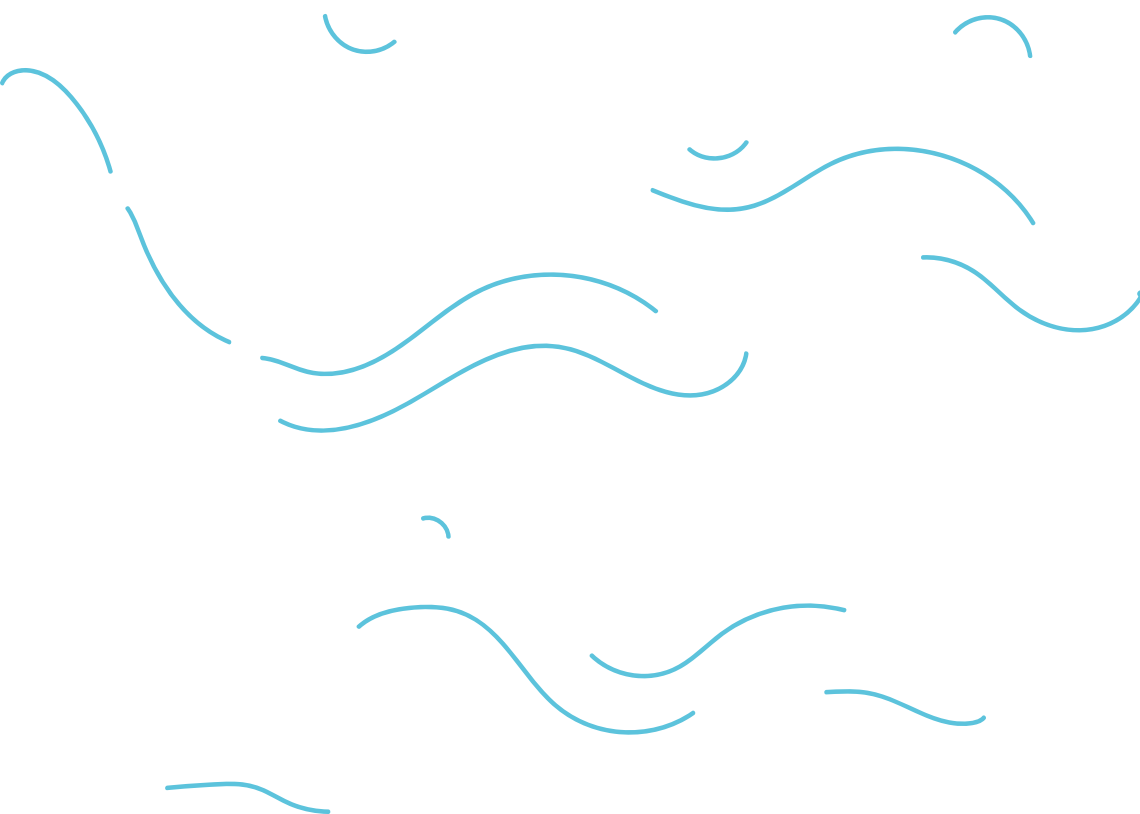


## SLIM AIR CONDITIONER



### GENERAL FEATURES

- Cooling capacity: 1100-2200 W
- Protection degree: IP66 - NEMA 4X
- µchannel and self-cleaning condenser
- General alarm contacts and remote control
- Quick and fast assembly and maintenance
- Designed to work without a filter
- Material: stainless steel AISI 304L
- Quick electrical connection - terminal block
- Special painting on request



### EXTERNAL MOUNTING

MODEL	VOLT/ FREQUENCY	POW. WATT	DIMENSIONS MM
ECD1146.DOE	3 - 400-50/460-60	1100	460X1605X205
ECD1115.DOE	1 - 115/50-60	1100	460X1605X205
ECD1123.DOE	1 - 230/50-60	1100	460X1605X205
ECD1546.DOE	3 - 400-50/460-60	1500	460X1635X202
ECD1515.DOE	1 - 115/50-60	1500	460X1635X202
ECD1523.DOE	1 - 230/50-60	2200	460X1635X202
ECD2246.DOE	3 - 400-50/460-60	2200	460X1605X205
ECD2215.DOE	1 - 115/50-60	2200	460X1605X205
ECD2223.DOE	1 - 230/50-60	2200	460X1605X205

### SEMI BUILT-IN MOUNTING

MODEL	VOLT/ FREQUENCY	POW. WATT	DIMENSIONS MM
ECD1146.DOS	3 - 400-50/460-60	1100	495X1635X202
ECD1115.DOS	1 - 115/50-60	1100	495X1635X202
ECD1123.DOS	1 - 230/50-60	1100	495X1635X202
ECD1546.DOS	3 - 400-50/460-60	1500	495X1635X202
ECD1515.DOS	1 - 115/50-60	1500	495X1635X202
ECD1523.DOS	1 - 230/50-60	1500	495X1635X202
ECD2246.DOS	3 - 400-50/460-60	2200	495X1635X202
ECD2215.DOS	1 - 115/50-60	2200	495X1635X202
ECD2223.DOS	1 - 230/50-60	2200	495X1635X202

### BUILT-IN MOUNTING

MODEL	VOLT/ FREQUENCY	POW. WATT	DIMENSIONS MM
ECD1146.DOI	3 - 400-50/460-60	1100	495X1635X202
ECD1115.DOI	1 - 115/50-60	1100	495X1635X202
ECD1123.DOI	1 - 230/50-60	1100	495X1635X202
ECD1546.DOI	3 - 400-50/460-60	1500	495X1635X202
ECD1515.DOI	1 - 115/50-60	1500	495X1635X202
ECD1523.DOI	1 - 230/50-60	1500	495X1635X202
ECD2246.DOI	3 - 400-50/460-60	2200	495X1635X202
ECD2215.DOI	1 - 115/50-60	2200	495X1635X202
ECD2223.DOI	1 - 230/50-60	2200	495X1635X202

### EXTERNAL PARTIALLY MOUNTING

MODELLO	VOLT/ FREQUENCY	POT. WATT	DIMENSIONI MM
ECD1146.DOP	3 - 400-50/460-60	1100	495X1635X202
ECD1115.DOP	1 - 115/50-60	1100	495X1635X202
ECD1123.DOP	1 - 230/50-60	1100	495X1635X202
ECD1546.DOP	3 - 400-50/460-60	1500	495X1635X202
ECD1515.DOP	1 - 115/50-60	1500	495X1635X202
ECD1523.DOP	1 - 230/50-60	1500	495X1635X202
ECD2246.DOP	3 - 400-50/460-60	2200	495X1635X202
ECD2215.DOP	1 - 115/50-60	2200	495X1635X202
ECD2223.DOP	1 - 230/50-60	2200	495X1635X202





## ROOF-MOUNTED AIR CONDITIONER



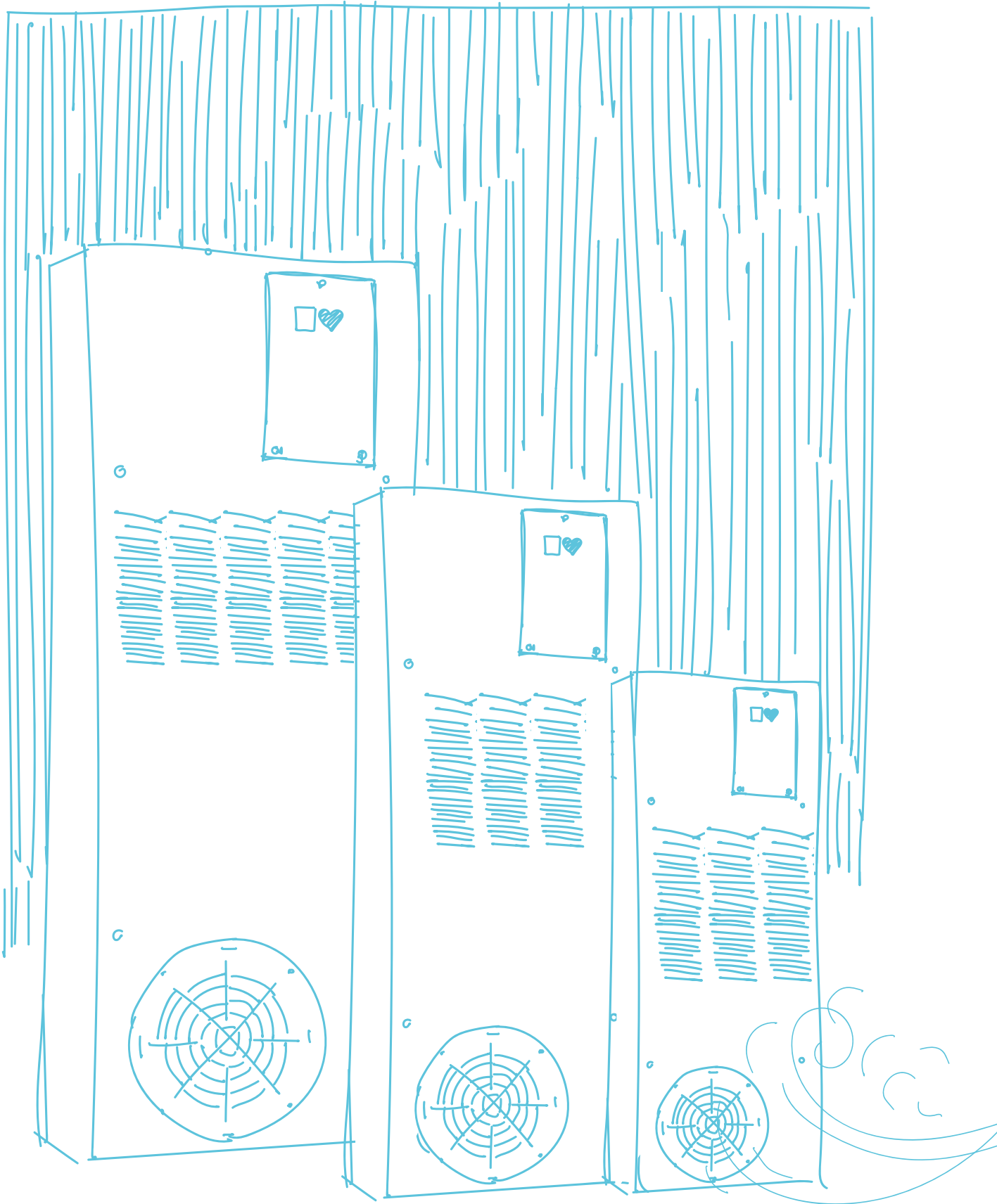
### GENERAL FEATURES

- Cooling capacity: 500-3800 W
- Protection degree: IP66 - NEMA 4X
- Self-cleaning condenser
- Anti-condensation hydrophilic evaporator
- Condensate dissipator
- ECB digital thermostat
- µchannel and self-cleaning condenser
- Quick and fast assembly and maintenance
- Designed to work without a filter
- Material: stainless steel 304 L
- Quick electrical connection - terminal block
- Special painting on request

## IP 55

MODEL	VOLT/ FREQUENCY	POW. WATT	DIMENSIONS MM
ECD0840.RO	2 - 400-50/460-60	800	600X340X350
ECD0815.RO	1 - 115/50-60	800	600X340X350
ECD0823.RO	1 - 230/50-60	800	600X340X350
ECD1040.RO	2 - 400-50/460-60	1000	600X340X350
ECD1015.RO	1 - 115/50-60	1000	600X340X350
ECD1023.RO	1 - 230/50-60	1000	600X340X350
ECD1540.RO	2 - 400-50/460-60	1500	700X400X400
ECD1515.RO	1 - 115/50-60	1500	700X400X400
ECD1523.RO	1 - 230/50-60	1500	700X400X400





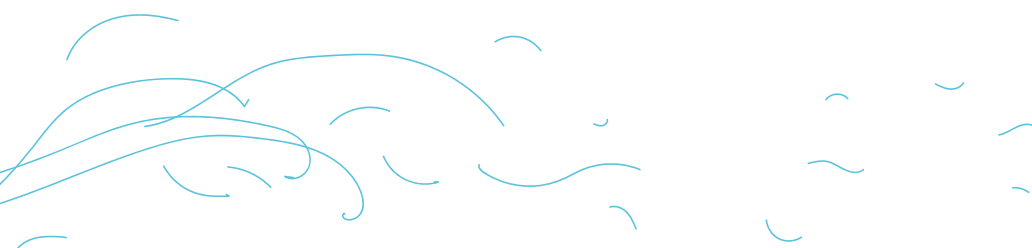


## SC INDOOR RANGE

The range of AIR-to-AIR heat exchangers includes products with:

- High protection degree on the cabinet side
- Different power supplies available
- CE and UL certified
- Wall mounting

air conditioning





## AIR-TO-AIR HEAT EXCHANGERS

### GENERAL FEATURES



- Patented aluminum exchange pack to guarantee efficiency with reduced dimensions
- 3 sizes
- Specific yield 17-55 W/k
- Quick and fast assembly and maintenance
- No condensation
- Designed to work without a filter
- Aluzinc material: more than 600 hours of salt spray resistance
- Quick electrical connection - terminal block
- Special painting on request

## AIR-TO-AIR HEAT EXCHANGERS UL CERTIFIED

### GENERAL FEATURES



- Patented aluminum exchange pack to guarantee efficiency with reduced dimensions
- 3 sizes
- Specific yield 17-55 W/k
- Quick and fast assembly and maintenance
- No condensation
- Designed to work without a filter
- Aluzinc material: more than 600 hours of salt spray resistance
- Quick electrical connection - terminal block
- Special painting on request



## IP 55

### EXTERNAL MOUNTING

MODEL	VOLT/ FREQUENCY	POW. WATT	DIMENSIONS MM
ESC1715.AAE	1 - 115/50-60	17	280X710X100
ESC1723.AAE	1 - 230/50-60	17	280X710X100
ESC4023.AAE	1 - 230/50-60	40	255X790X100
ESC4015.AAE	1 - 115/50-60	40	255X790X100
ESC5515.AAE	1 - 115/50-60	55	400X950X100
ESC5523.AAE	1 - 230/50-60	55	400X950X100

### EXTERNAL MOUNTING

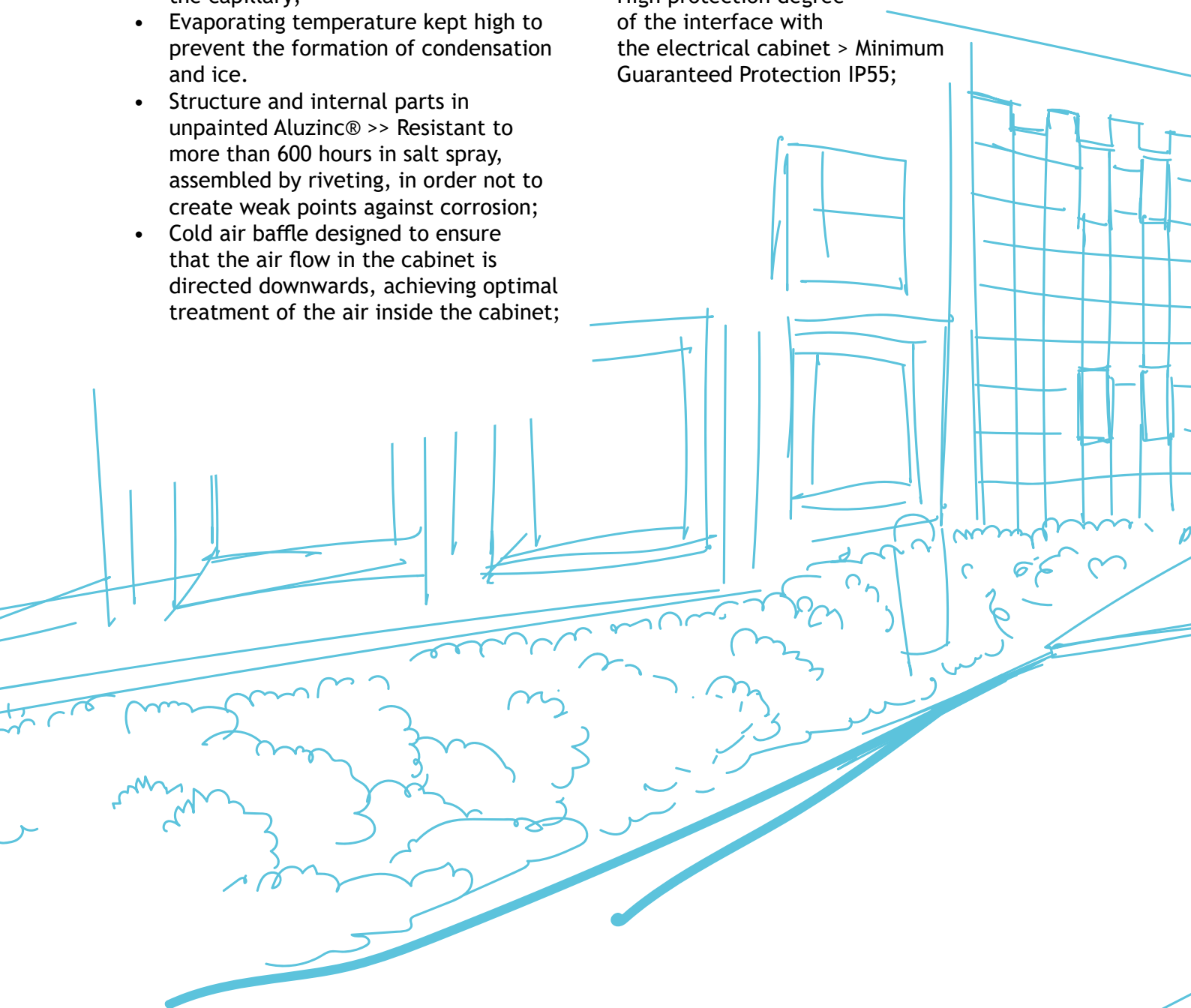
MODEL	VOLT/ FREQUENCY	POW. WATT	DIMENSIONS MM
ESC1723.AAUE	1 - 230/50-60	17	280X710X100
ESC4023.AAUE	1 - 230/50-60	40	255X790X100
ESC4015.AAUE	1 - 115/50-60	40	255X790X100
ESC1715.AAUE	1 - 115/50-60	17	400X950X100
ESC5515.AAUE	1 - 115/50-60	55	400X950X100
ESC5523.AAUE	1 - 230/50-60	55	400X950X100

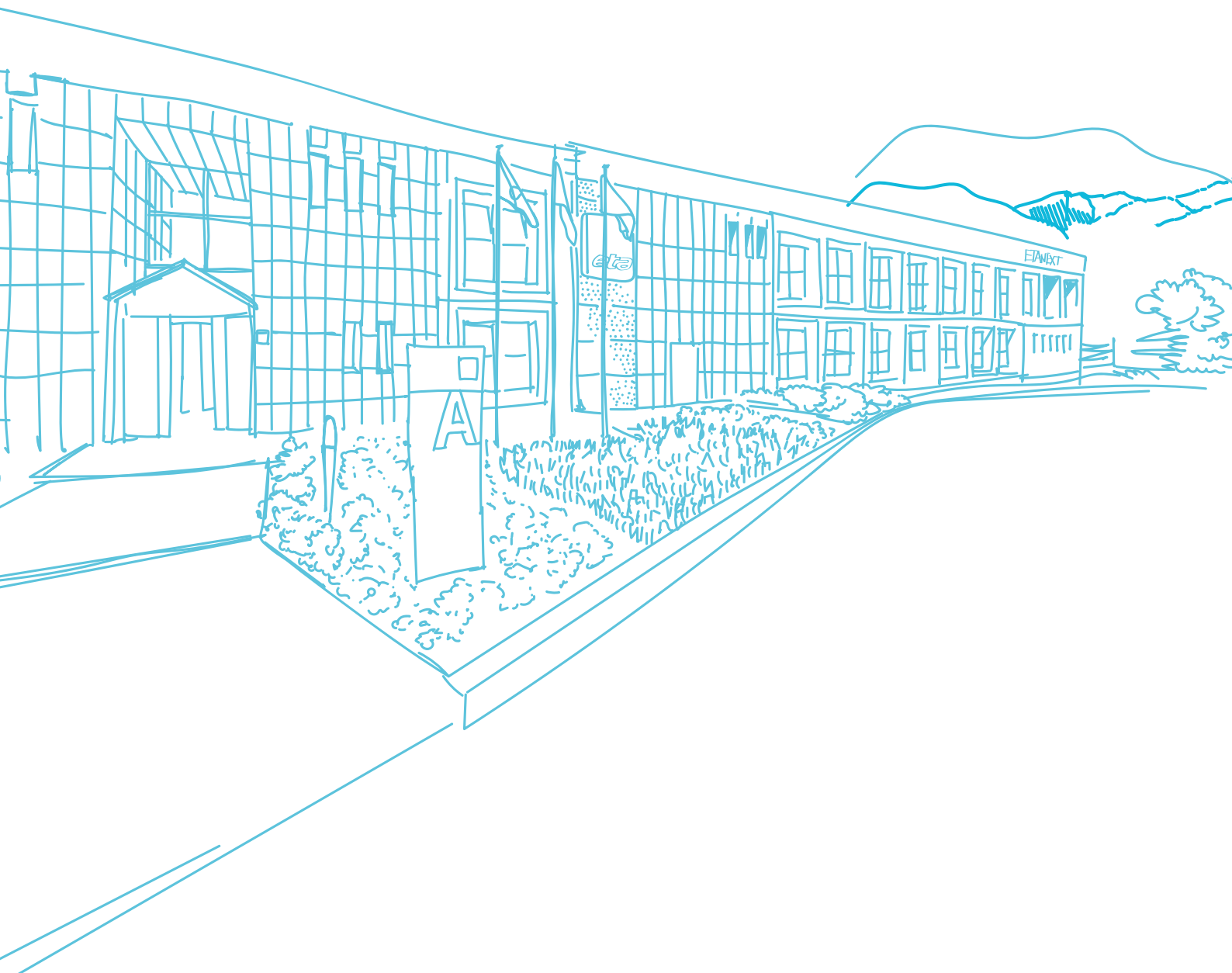




## WHY CHOOSE AN ETA AIR CONDITIONER

- Operation without filters;
- Timescales for the replacement of components very reduced;
- Easy maintenance;
- Free condensing battery on three sides (Easy cleaning);
- Batteries: space between the fins of at least 3mm to prevent blockage caused by impurities present in the air;
- Optimization of the refrigerating capacity thanks to a correct sizing of the capillary;
- Evaporating temperature kept high to prevent the formation of condensation and ice.
- Structure and internal parts in unpainted Aluzinc® >> Resistant to more than 600 hours in salt spray, assembled by riveting, in order not to create weak points against corrosion;
- Cold air baffle designed to ensure that the air flow in the cabinet is directed downwards, achieving optimal treatment of the air inside the cabinet;
- Two channels direct any condensate to the bottom of the air conditioner;
- Possibility of integrating the condensate dissipator on almost all models with PTC technology;
- Standard Condensation Dissipator on the Roof Range;
- Range Resistant to High Temperatures (Up to 55° C ambient);
- Possibility on some models to reach 60° C Ambient
- High protection degree of the interface with the electrical cabinet > Minimum Guaranteed Protection IP55;







ETA  
Headquarters  
Via Monte Barzaghino 6  
22035 Canzo (CO)  
Italy  
+39 031.673611  
+39 031.670554  
info@eta.it  
www.eta.it

SASU E.T.A. France  
Rue du Pré aux Boeufs  
76806 St Etienne du Rouvray  
France  
+33 02 35643470  
info@etafrance.fr

ETA ENCLOSURES Sp. z o.o.  
Sikorskiego 44  
60-451 Wrzesnia  
Poland  
+48 660 515 887  
biuro@eta-enclosures.it

E.T.A. Enclosures Ltd.  
Ignite Magna Way 2  
Rotherham S60 1FD  
United Kingdom  
+44 1709 386630  
+44 1709 369524  
info@eta-enclosures.co.uk

air conditioning